

AdvancingLincolnAvenue.com



Advancing **Lincoln** Avenue

October 6, 2022

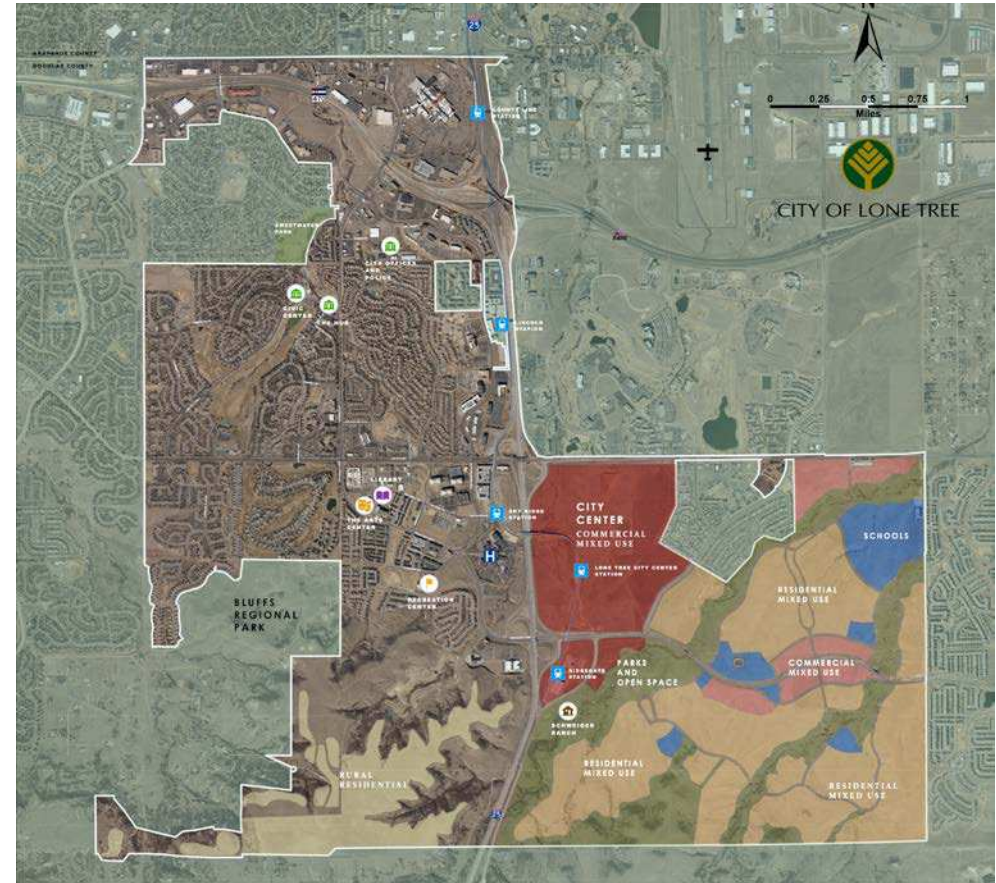


Why Are We Advancing Lincoln Avenue?

Douglas County and Lone Tree are growing




We need a plan for long-term improvements that support our economic and community vitality.



Project Purpose and Need (Draft)

Purpose Statement

The purpose of the Advancing Lincoln Avenue project is to provide safe, efficient and reliable travel in the Lincoln Avenue corridor, including its interchange with I-25, while balancing regional mobility with existing and proposed local land use and property access. Improvements are needed to improve safety and operations, reduce traffic congestion, and enhance multimodal mobility and connectivity to integrate travel options for various Lincoln Avenue corridor users.

Need Statements



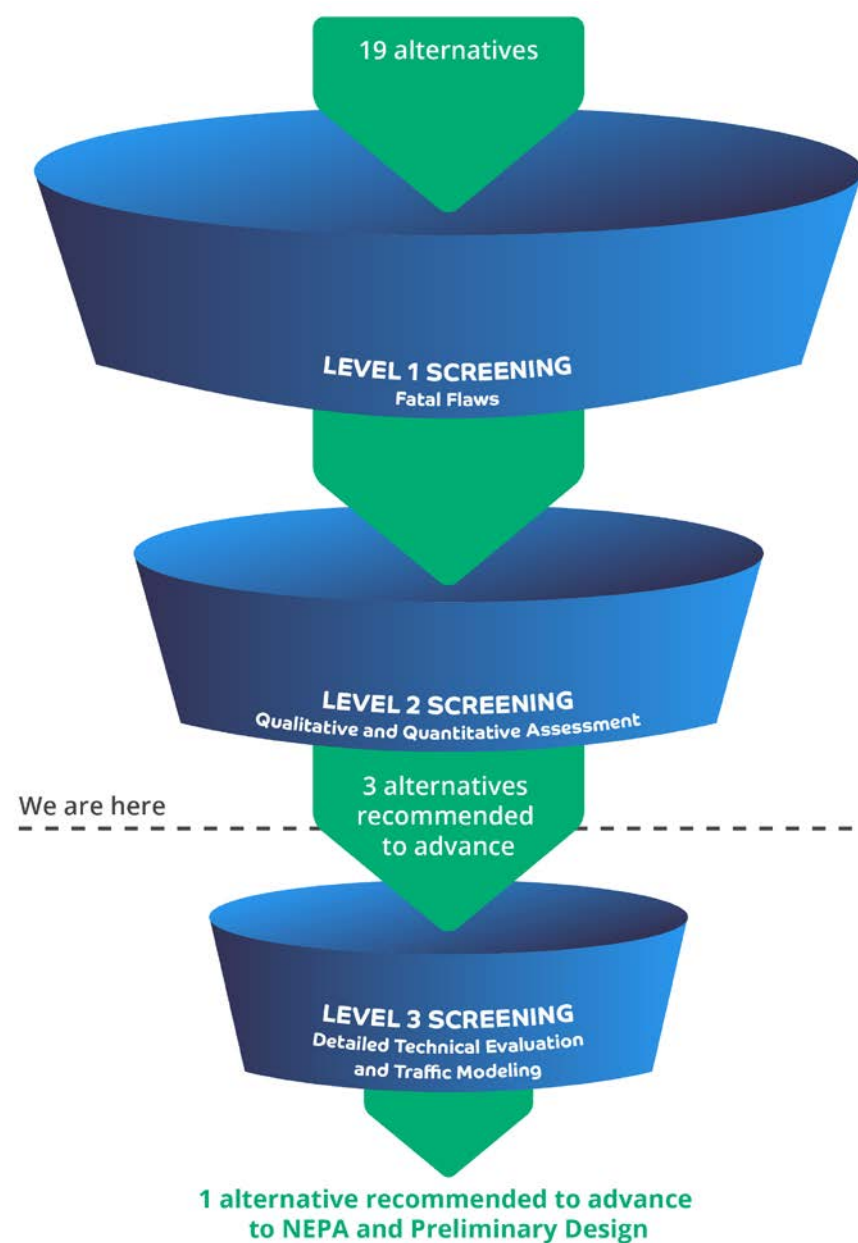
- Enhance Multimodal Travel and Connectivity
- Improve Operations on Lincoln Avenue and through the I-25/Lincoln Avenue interchange
- Address Existing and Projected Traffic Congestion
- Improve Safety

Mobility in the Project Area

- Recognition of recent sustainable practices and transportation investments - City of Lone Tree, Douglas County and Denver South
- Our project will continue these practices with a focus on mobility
- Our project will evaluate existing facilities/connections and identify opportunities for increasing options for all users
- Our project will collaborate with stakeholders on the big-picture multimodal network



Alternatives Screening Process

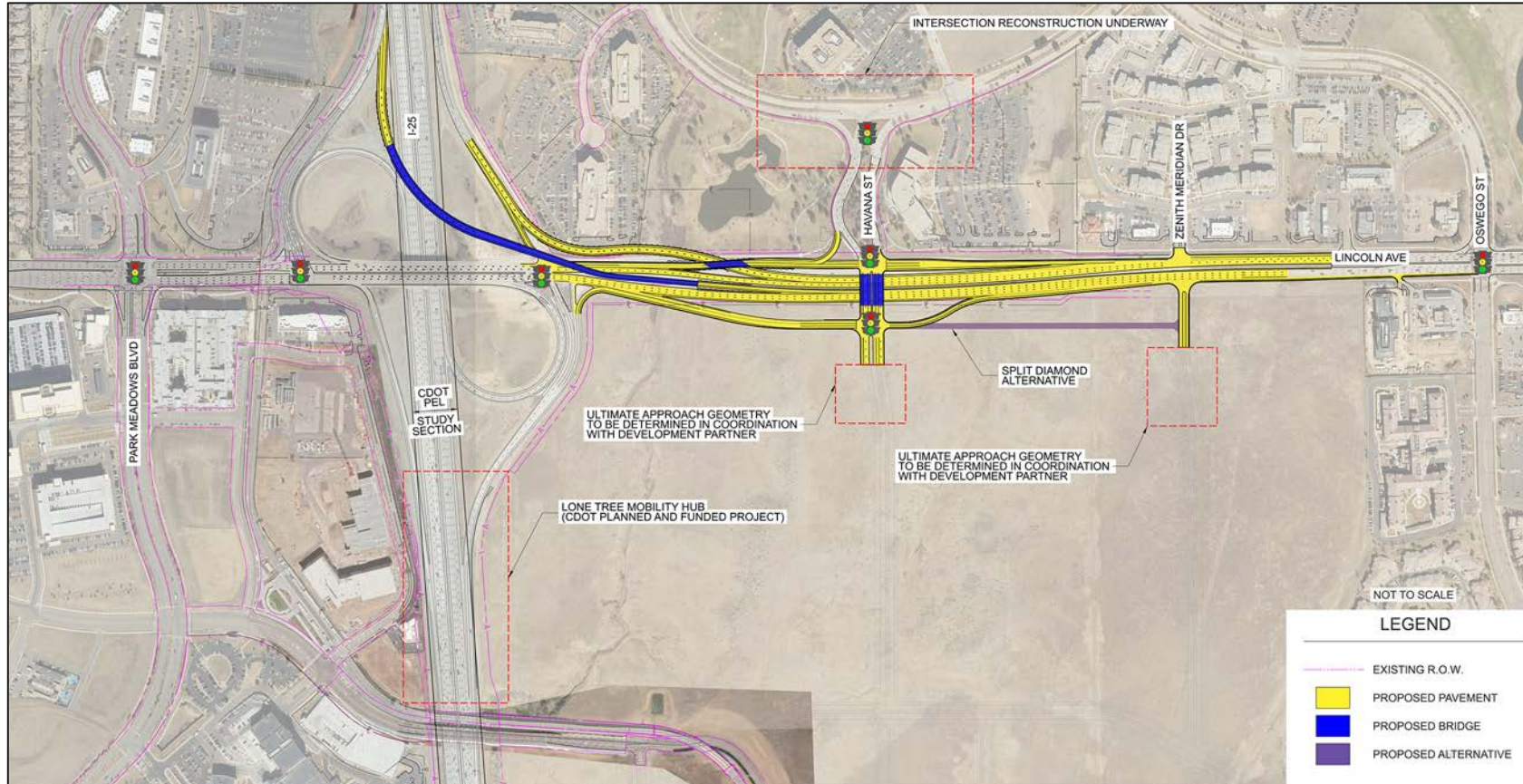


Alternative Evaluation Criteria Categories:

- Mobility and traffic operations
- Multimodal travel and connectivity
- Safety
- Environmental and community impacts
- Implementation

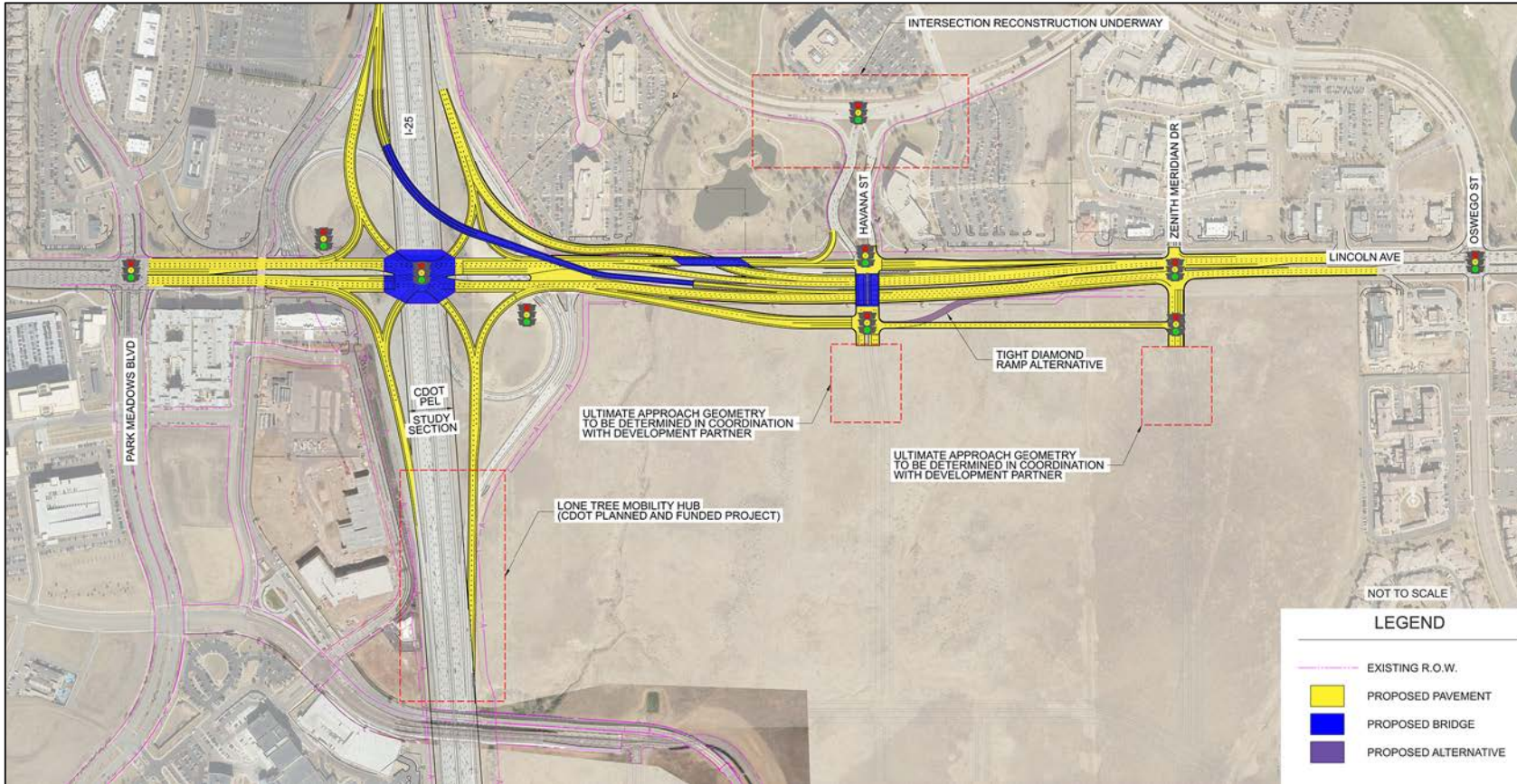


Combined Alternative 1 – Existing PARCLO with Flyover (I-25) and Tight Diamond Interchange (Havana)

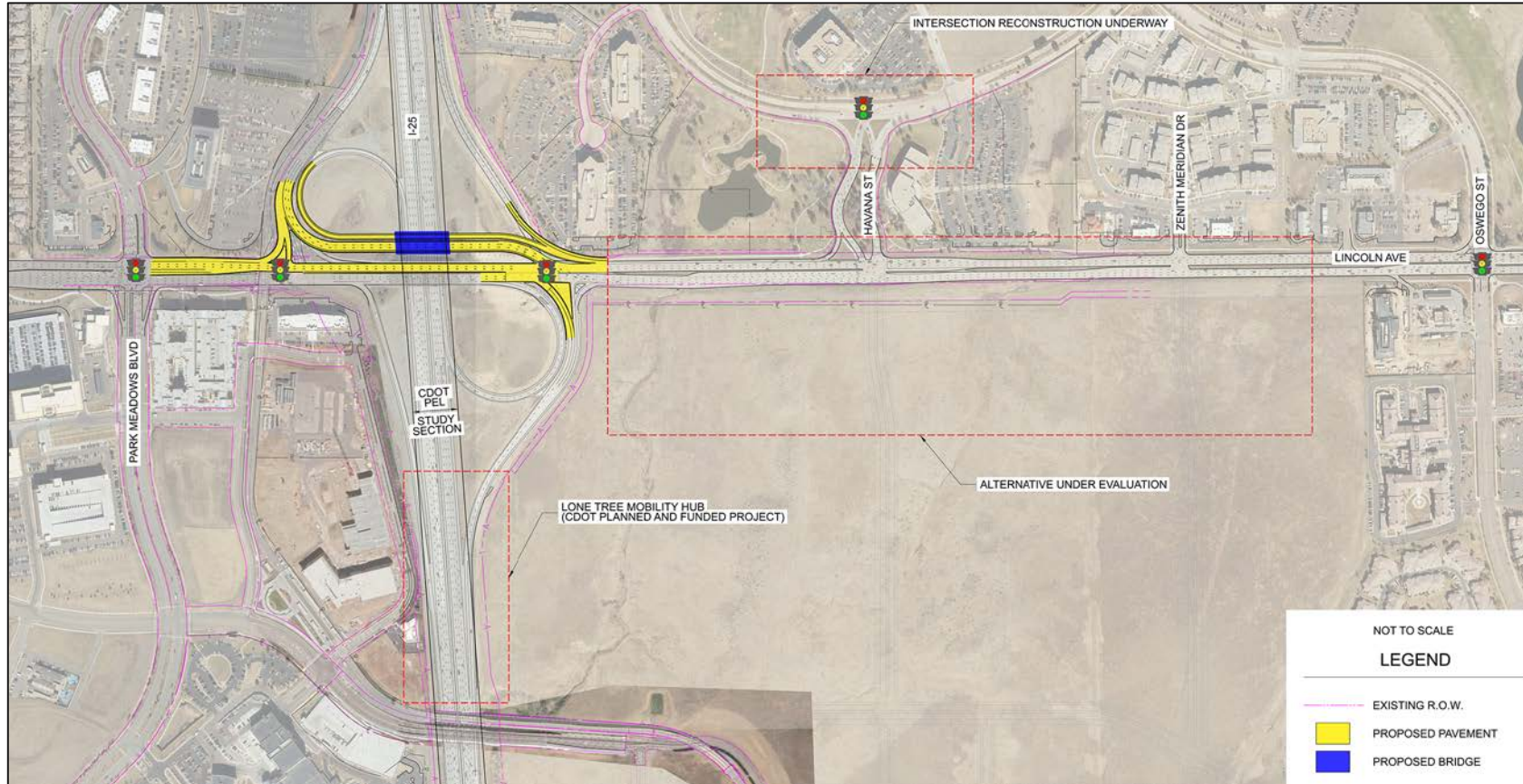




Combined Alternative 2 – SPUI with Flyover (I-25) and Split Diamond Interchange (Havana)

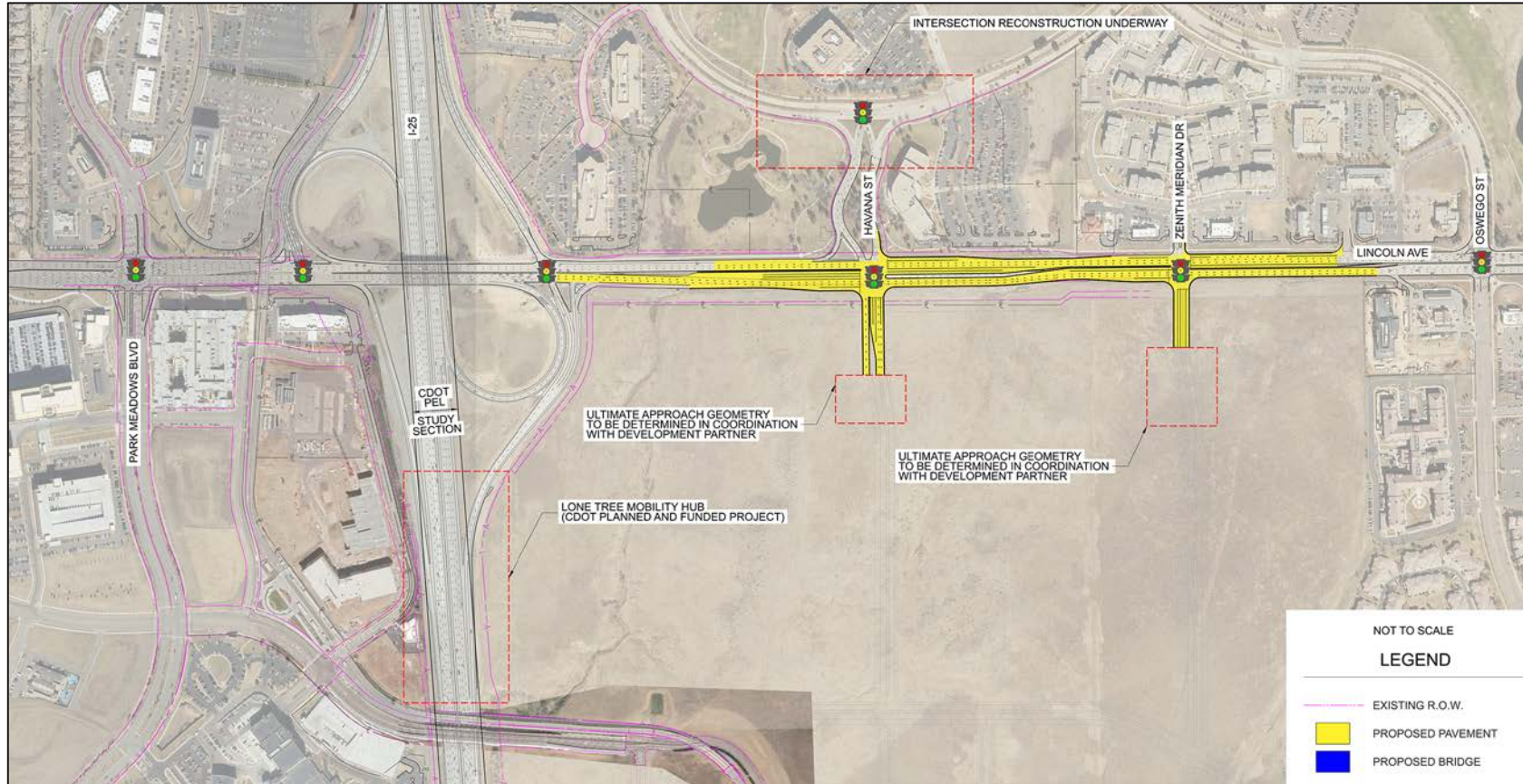


Combined Alternative 3 – Existing PARCLO with East Ramp Terminal Connection (I-25) and Diamond Interchange (Havana)









No Action – Existing PARCLO with Planned Improvements (Havana and Zenith)



Alternatives Recommended to Advance to Level 3 Screening

Alternative	Evaluation Criteria Traffic Multimodal Safety Enviro. Implement.	Recommendation
Combined Alternative 1 Existing PARCLO with Flyover (I-25) and Tight Diamond Interchange (Havana)		Good Mobility Rating <ul style="list-style-type: none"> • Flyover ramp separates the highest volume of traffic (SB I-25 to EB Lincoln) from the interchange • SB to EB flyover ramp traffic not stopped at Havana • Substantial reduction in delays and queuing at ramp intersections Good Safety Rating <ul style="list-style-type: none"> • Reduces volumes and associated crash potential at ramp terminals
Combined Alternative 2 SPUI with Flyover (I-25) and Split Diamond Interchange (Havana)		Good Mobility Rating <ul style="list-style-type: none"> • Flyover ramp separates the highest volume of traffic (SB I-25 to EB Lincoln) from the interchange • SB to EB flyover ramp traffic not stopped at Havana • Substantial reduction in delays and queuing at ramp intersections Very Good Safety & Multimodal Ratings <ul style="list-style-type: none"> • Minimizes weaving for Havana access • Reduces number of and increases spacing between signalized intersections • Reduces number of free-flow movements

Alternatives Recommended to Advance to Level 3 Screening cont.

Alternative	Evaluation Criteria Traffic Multimodal Safety Enviro. Implement.	Recommendation
Combined Alternative 3 Existing PARCLO with East Ramp Terminal Connection (I-25) and Diamond Interchange (Havana)		Good Mobility Rating <ul style="list-style-type: none"> • Good capacity for heavy SB I-25 to EB Lincoln movement • Reduces ramp terminal intersection delay better than most build alternatives Good Safety Rating <ul style="list-style-type: none"> • Consolidated turning movements with EB Lincoln ramp terminus • Minimizes or eliminates weaving conflicts Very Good Environmental/Community Rating <ul style="list-style-type: none"> • No right-of-way impacts • No change in visibility of Meridian or Coventry developments
No Action Existing PARCLO with Planned Improvements (Havana and Zenith)		No change to existing condition aside from currently planned/funded local improvements

Overview of Upcoming Level 3 Analysis

- Integrate multimodal elements
- Detailed traffic modeling
- Alternative refinements
- Recommended alternative by end of 2022

Next Steps

Single recommended build alternative identified in November/December 2022

Next public meeting to review recommended alternative in January 2023





THANK YOU!

- Colorado Department of Transportation
- Coventry Development Corporation
- Denver Regional Council of Governments
- Federal Highway Administration
- Meridian Metro District
- Omni Park Metro District
- Rampart Range Metro District
- Regional Transportation District
- Town of Parker